

CHECKLIST FOR AUTHORS

- Computer-generated disk(s) of manuscript and, if possible, illustrations.
- Manuscript: typed single-spaced including separate references, figures, and tables.
- Abstract (structured) of no more than 250 words.
- References: single-spaced, alphabetical order, Journal style.
- Tables: On separate pages and titled.
- Illustrations: Clearly numbered and titled.

stamp

Quintessence Publishing Co Ltd.
Quintessence House
Grafton Road
New Malden, Surrey KT3 3AB
United Kingdom

Oral Biosciences & Medicine GUIDELINES FOR AUTHORS

Journal of Oral Biosciences & Medicine conveys high quality scientific progress to clinicians, researchers and teachers. Focus is on structural and functional molecular biology under normal and pathological conditions related to the teeth, jaws, oral mucosa, saliva and salivary glands, oro-facial pain, chemo-sensory functions and disturbances, and effects and side effects of therapeutic interventions. Emphasis is on basic experimental and clinical research to improve our understanding of oral disease, its biology, diagnosis, prevention and management. Contributions on translational research issues are also welcome. Articles written for professional and educational purposes are particularly welcome.

Within the scope the Journal publishes peer-reviewed original articles as mentioned below:

1. **Basic Science** as it relates to oral diseases or diseases affecting the oral cavity directly or secondarily
2. Pathophysiology – perhaps as a subject of Basic Sciences section with the same philosophy.
3. **Diagnostic Sciences** – from well defined and traditional laboratory techniques to molecular diagnostics, basic and applied.
4. **Therapeutics** – clinical trials, personal or institutional experience with various modalities applicable to the science and practice of Oral Biosciences and Medicine, provided the manuscripts and study designs are valid and clinical analysis rigorous.
5. **Letters to the Editor(s)** – which address important issues, controversies or reactions to previously published information either in this journal or others which may have direct importance to Oral Biosciences and Medicine science or practice.
6. **A true and open section on Controversies** in Oral Biosciences and Medicine be it with therapeutic concepts, current trends or established dogma.
7. **Oral medicine education** – at both the undergraduate and advanced levels, where curriculum design may be an issue, accreditation matters, etc.
8. **Editorials** – both invited and spontaneous.
9. **Systematic reviews**

SUBMISSION INSTRUCTIONS

Submission of manuscripts in order of preference:

1. Submission via online submission service (www.obmjournals.dk)
Manuscript texts should be uploaded as PDF or PC-word files with tables and figures preferably embedded within the PC-word document. A broad range of file formats are acceptable. No paper version required but high resolution photographs or illustrations should be sent by normal mail to the editorial office (see mailing address below). Online submissions are automatically uploaded into the editorial office's reviewer assignment schedule and are therefore processed immediately upon upload.
2. Submission via e-mail as a PC-word document (pc@quintessence.dk). Illustrations can be attached in any format that can be opened using Adobe Photoshop, (TIF, GIF, JPG, PSD, EPS etc.) or as Microsoft PowerPoint Documents (ppt). No paper version required but high resolution photographs or illustrations should be sent by nor-

mal mail to the editorial office (see mailing address below).

3. One paper copy of the manuscript plus a floppy diskette or CD-ROM (mandatory) containing a PC-word file of the manuscript text tables, and legends. Figures should be included on the disk if possible in any format that can be opened using Adobe Photoshop, (TIF, GIF, JPG, PSD, EPS etc.) or as a Microsoft PowerPoint Documents (ppt).

Mailing address:

Manuscript Editor, Journal of Oral Biosciences & Medicine
Quintessence Copenhagen
European Editorial Office
Fuglevadsvej 27, DK-2800 Lyngby, Denmark

Illustrations that cannot be sent electronically will be scanned at the editorial office and sent to reviewers via e-mail along with the manuscript to expedite the evaluation process. Resubmitted manuscripts should also be submitted in the above manner. Please note that supplying electronic versions of your tables and illustrations upon resubmission will assure a faster publication time if the manuscript is accepted.

Number of Authors. Authors listed in the byline should be limited to 6. Secondary contributors can be acknowledged at the end of the article (Special circumstances will be considered by the editors).

Review/editing of manuscripts. Manuscripts will be reviewed by the editors, and at least two reviewers with expertise within the scope of the article. The publisher reserves the right to edit accepted manuscripts to fit the space available and to ensure conciseness, clarity, and stylistic consistency, subject to the author's final approval.

Adherence to guidelines. Manuscripts that are not prepared in accordance with these guidelines will be returned to the author before review.

MANUSCRIPT PREPARATION

- The Journal will follow as much as possible the recommendations of the International Committee of Medical Journal Editors (Vancouver Group) in regard to preparation of manuscripts and authorship (Uniform requirements for manuscripts submitted to biomedical journals. *Ann Intern Med* 1997;126:36-47).
- **Title page.** The first page should include the title of the article (descriptive but as concise as possible) and the names, degrees, title, professional affiliation, and full address of all authors. Phone, fax, and e-mail address must also be provided for the corresponding author, who will be assumed to be the first-listed author unless otherwise noted. If the paper was presented before an organized group, the name of the organization, location, and date should be included.
- **3-5 keywords.** (use mesh headings).
- **Structured abstract.** Include a maximum 250-word structured abstract (with headings Purpose, Materials and Methods, Results, Conclusion).
- **Introduction.** Summarize the rationale and purpose of the study, giving only pertinent references. Clearly state the working hypothesis.
- **Materials and Methods.** Present materials and methods in sufficient detail to allow con-

firmation of the observations. Published methods should be referenced and discussed only briefly, unless modifications have been made. Indicate the statistical methods used, if applicable. More extensive methodology shall be published electronically only. All clinical trials must have ethical approval in accordance with the Declaration of Helsinki (<http://www.wma.net>) and evidence of this may be requested.

- **Results.** Present results in a logical sequence in the text, tables, and illustrations. Do not repeat in the text all the data in the tables or illustrations; emphasize only important observations. Additional results shall be published electronically only.
- **Discussion.** Emphasize the new and important aspects of the study and the conclusions that follow from them. Do not repeat in detail data or other material given in the Introduction or Results section. Relate observations to other relevant studies and point out the implications of the findings and their limitations.

- **Acknowledgments.** Acknowledge persons who have made substantive contributions to the study. Specify grant or other financial support, citing the name of the supporting organization and grant number.
- **Abbreviations.** The full term for which an abbreviation stands should precede its first use in the text unless it is a standard unit of measurement.
- **Trade names.** Generic terms are to be used whenever possible, but trade names and manufacturer should be included parenthetically at first mention.

REFERENCES

- **All references must be cited** in the text, (Author, year) according to the reference list. More than two authors use et al. (Author et al, year).
- **The reference list** should appear at the end of the article in alphabetical sequence.
- **Do not include unpublished data** or personal communications in the reference list. Cite such references parenthetically in the text and include a date.
- **Avoid using abstracts** as references.
- **Provide complete information** for each reference, including names of all authors (up to six). If the reference is to part of a book, also include title of the chapter and names of the book's editor(s).
- **For journal abbreviations** please use the NCBI Journal Browser at: <http://www.ncbi.nlm.nih.gov/entrez/jrbrowser.cgi>

Journal reference style:

Bertacchini SM, Abate PF, Blank A, Baglieto MF, Macchi RL. Solubility and fluoride release in ionomers and compomers. *Quintessence Int* 1999;30:193-197.

Book reference style:

Hannam AG, Langenbach GEJ, Peck CC. Computer simulations of jaw biomechanics. In: McNeill C (ed). *Science and Practice of Occlusion*. Chicago: Quintessence 1997;187-194.

ILLUSTRATIONS

- All illustrations must be numbered and cited in the text in order of appearance. **Electronic submission preferred.** Paper version (No paper version required but high resolution photographs or illustrations should be sent by normal mail to the editorial office):
- The figure number and first author's last name should be indicated on the back of each photograph or on the mount of each slide. Also indicate the top edge lightly in pencil.

- Do not bend, fold, or use paper clips. Do not mount slides in glass.
- For protection against damage or loss, authors should retain duplicate slides and illustrations.
- Original artwork must be provided with original submission.

- **Black & white** - Submit one set of high-quality glossy prints. Should the quality prove inadequate, negatives will be requested as well. Photographs should be unmounted and untrimmed.
- **Radiographs** - Submit the original radiograph.

- **Color** - Original slides (35 mm transparencies) must be submitted, plus one set of prints made from them. When instruments and appliances are photographed, a neutral background is best; structured fabrics are unsuitable.
- **Line drawings** - Figures, charts, and graphs should be professionally drawn and lettered large enough to be read after reduction. Good-quality computer-generated laser prints are acceptable (no photocopies). Lines within graphs should be of a single weight unless special emphasis is needed.

- **Legends** - Figure legends should be grouped on a separate sheet or at the end of the text file, and typed double-spaced.

TABLES

- Each table should be logically organized, on a separate sheet or at the end of the text file, and numbered consecutively.
- The title and footnotes should be typed on the same sheet/page as the table.

MANDATORY SUBMISSION AND COPYRIGHT FORM

The Mandatory Submission and Copyright Form, signed by all authors, must accompany all submitted manuscripts before they can be reviewed for publication. All authors must be contributors and guarantors. The form can be downloaded from the journals homepage: www.quintessence.dk/obm or requested from: Quintessence Copenhagen, European Editorial Office, Fuglevadsvej 27, DK-2800 Lyngby, Denmark. E-mail: pc@quintessence.dk

Electronic submissions: scan the signed form and submit as JPG or TIF file.

PERMISSIONS & WAIVERS

- Permission of author and publisher must be obtained for the direct use of material (text, photos, drawings) under copyright that does not belong to the author.
- If a patient may be identified from a case report, illustration or papers we ask for a written consent of the patient to allow publication. A consent form can be downloaded from the journals homepage: www.quintessence.dk/obm or requested from: Quintessence Copenhagen, European Editorial Office, Fuglevadsvej 27, DK-2800 Lyngby, Denmark. E-mail: pc@quintessence.dk
- Grant support or any other indirect involvement or conflict of interest or commercial interest must be specified.
- For clinical studies the approval of the ethical committee must be presented.

REPRINTS

The corresponding author is given 25 free reprints of the article. If additional reprints are desired, they must be ordered from the publisher when the page proofs are reviewed by the authors. The publisher does not stock reprints; however, back issues can be purchased.

NEW SCIENTIFIC JOURNAL

O B M

Oral Biosciences & Medicine

from molecule to mouth

Editors:

Birgitte Nauntofte
Jesper Reibel
Peter A. Reichart
James Sciubba
Joanna Zakrzewska

1

Volume 1
Issue 1
March 2004

Call for Papers & Order Form



Oral Biosciences & Medicine

from molecule to mouth

AIM & SCOPE

Oral Biosciences & Medicine conveys high quality scientific progress to clinicians, researchers and teachers. Focus is on structural and functional molecular biology under normal and pathological conditions related to the teeth, jaws, oral mucosa, saliva and salivary glands, orofacial pain, chemo-sensory functions and disturbances, and effects and side effects of therapeutic interventions. Emphasis is on basic experimental and clinical research to improve our understanding of oral disease, its biology, diagnosis, prevention and management. Contributions on translational research issues are also welcome. Articles written for professional and educational purposes are particularly welcome.

EDITORS

- Birgitte Nauntofte, Copenhagen, Denmark
- Jesper Reibel, Copenhagen, Denmark
- Peter A. Reichart, Berlin, Germany
- James Sciubba, Baltimore, USA
- Joanna Zakrzewska, London, UK

Statistical Adviser:

- Tatjana McFarlane, London, UK

EDITORIAL BOARD

- Henning Birkedal-Hansen, Bethesda, USA
- Pål Brodin, Oslo, Norway
- Antonio Carassi, Milano, Italy
- John Eveson, Bristol, UK
- Michael Goldberg, Paris, France
- Bernhard Guggenheim, Zurich, Switzerland
- Jimmy Hu, Toronto, Canada
- Piranit Kantaputra, Chiangmai, Thailand
- Brian O'Connell, Dublin, Ireland
- Crispian Scully, London, UK
- Berry J. Sessle, Toronto, Canada
- Paul T. Sharpe, London, UK
- Jonathan A. Ship, New York, USA
- Andrew I. Spielman, New York, USA
- Hiroshi Sugiya, Chiba, Japan
- Peter Svensson, Aarhus, Denmark
- Irma Thesleff, Helsinki, Finland
- Martin H. Thornhill, San Antonio, USA
- Edmond Truelove, Washington, USA

Authors please contact:

Quintessence Copenhagen
European Editorial Office
Fuglevadsvej 27
DK-2800 Lyngby, Denmark
Tel: +45 45 93 70 28
Fax: +45 45 93 70 29
E-mail: pc@quintessence.dk
Web: www.quintessence.dk
Journal homepage:
www.quintessence.dk/obm

Subscription Rates for Oral Biosciences & Medicine in 2004

4 issues			
Individual	€ 90 / £ 70	Airmail	€ 105 / £ 82
Institutional	€ 220 / £ 169	Airmail	€ 233 / £ 181
Student	€ 45 / £ 35	Airmail	€ 60 / £ 47
Single Issue	€ 30 / £ 24	Airmail	€ 35 / £ 27

Please order by mail

Quintessence Publishing Co Ltd.
Quintessence House, Grafton Road
New Malden, Surrey KT3 3AB, United Kingdom

or fax +44(0)20/8336 1484



Oral Biosciences & Medicine
from molecule to mouth

Please send me a free sample copy of Oral Biosciences & Medicine. My subscription will automatically be recorded starting with the next issue.

The Subscription rates for 2004:

Individual	<input type="checkbox"/> € 90 / £ 70	<input type="checkbox"/> Airmail € 105 / £ 82
Institutional	<input type="checkbox"/> € 220 / £ 169	<input type="checkbox"/> Airmail € 233 / £ 181
Student	<input type="checkbox"/> € 45 / £ 35	<input type="checkbox"/> Airmail € 60 / £ 47

Subscriptions are renewed annually. If you do not wish to renew your subscription cancellations must be made in writing and received not later than three months prior to the end of the current subscription period.

Send me a pro-forma invoice

Charge to my credit/debit card:

- Visa/Delta MasterCard Amex
- Switch Switch issue No. _____

Card No. _____

Expiry date ____/____/____ Signature _____

Payment must be made in £Sterling.

Date _____ Signature _____

Name _____

Address _____

City _____

Postal Code _____

Country _____

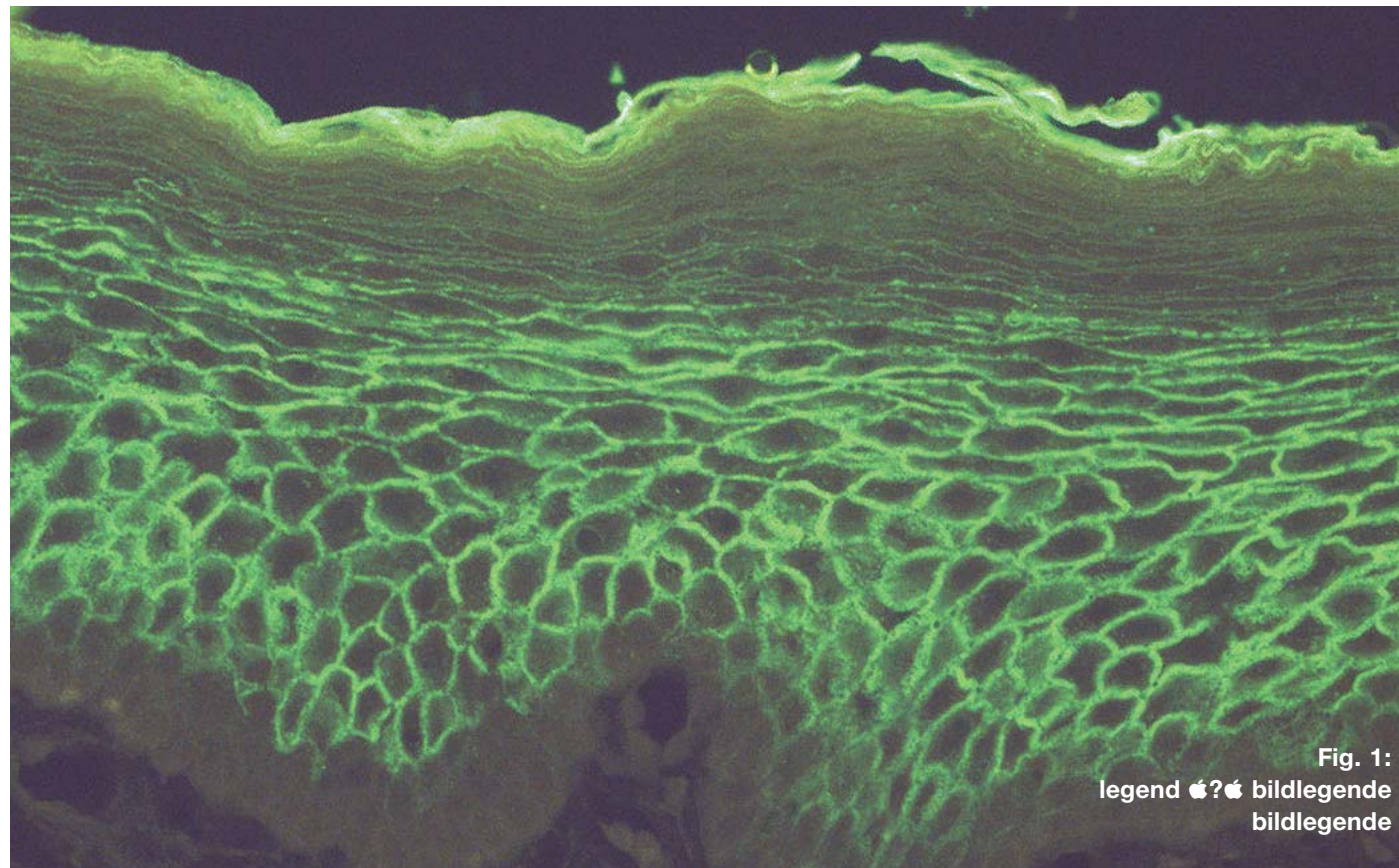


Fig. 1:
legend 🍏?🍏 bildlegende
bildlegende

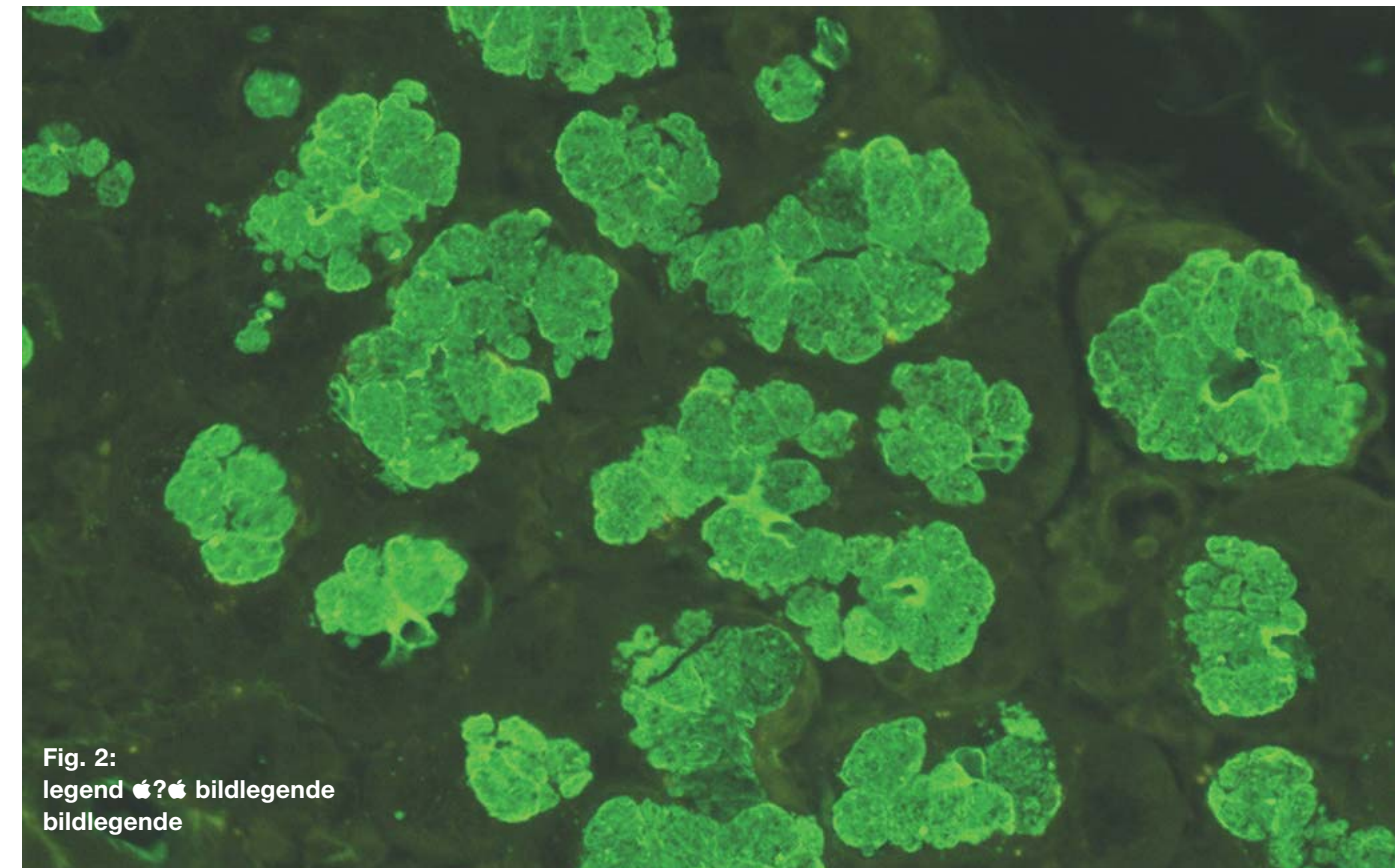


Fig. 2:
legend 🍏?🍏 bildlegende
bildlegende